

Standard Charger & Custom Charger

OPERATIONS MANUAL



Standard Charger**Custom Charger**

The Standard Charger is for *standard*-style, lithium-ion rechargeable hearing aids. The Custom Charger is for *custom*-style, lithium-ion rechargeable hearing aids. In order to charge the hearing aids, both of these chargers must be plugged into an external power source (i.e. wall outlet).

| | |
|-------------------------------------|----|
| Introduction | 3 |
| Charger Overview | 4 |
| Operation | |
| Charging Your Hearing Aids | 6 |
| Power On & Off | 8 |
| Charger Care | 9 |
| Troubleshooting Guides | 10 |
| Regulatory Information | |
| Safety Information | 12 |
| FCC Information | 14 |

Features, Controls and Identification

1. Desiccant puck holder*
2. Cleaning brush
3. Earbud/earmold reservoir*
4. Charging ports/posts
5. Hearing aid charging LEDs
6. Power supply port/power cord

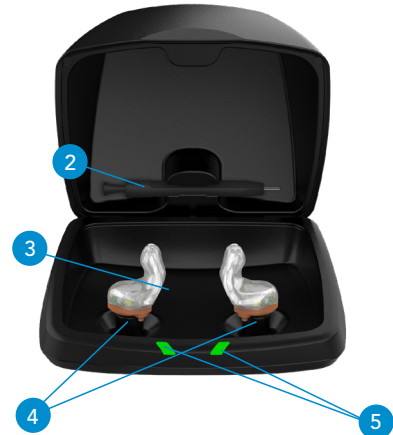


*Standard charger only.

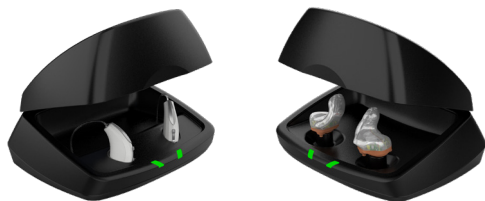
Standard Charger



Custom Charger



Charging Your Hearing Aids



- Place your hearing aids in the charger
 - Standard Charger: place hearing aids into charging ports with earbuds/earmolds resting in the reservoir
 - Custom Charger: place hearing aid faceplate facing downward so battery contacts on hearing aid align with charging posts within charger
- Your hearing aids will turn off automatically and begin to charge, so long as your charger is plugged into an external power source (i.e. wall outlet).
- Your hearing aids will automatically power on when removed from the charger, so long as your charger is plugged into an external power source (i.e. wall outlet).
- Upon plugging the charger into an external power source (i.e. wall outlet), the hearing aid charging LEDs will turn on for a few seconds to indicate connection to the power source.

- To illuminate the front LEDs, remove a hearing aid from its charging port/post for three seconds and then re-insert it. LEDs illuminate for 10 seconds before turning off.
- The LEDs corresponding to each hearing aid:
 - Glowing Green = Charging
 - Solid Green = Fully Charged
 - Blinking Red = Fault State. To reset, remove the hearing aids from charger, wait until LED turns off and re-insert aids. If Fault State continues, call your hearing professional.
- Charging occurs with the lid open or closed; your hearing aids will be fully charged in under 3 ½ hours.
- It is safe to store hearing aids in the charger after they are fully charged and any time that you are not wearing them.
- If you will not be wearing your hearing aids for an extended period of time (i.e. weeks), remove your hearing aids from the charging ports/posts. You will need to manually power off the hearing aids by pressing the user control on each hearing aid for three seconds.
- The desiccant puck provided with the Standard Charger will be effective for 3–6 months depending on moisture in the hearing aids and humidity. When the desiccant puck fades from blue to white, it should be replaced.

Power On & Off

- ON** - The hearing aids will power on automatically after removing them from the charger, as long as your charger is plugged into an external power source (i.e. wall outlet). There is a delay that allows you time to insert your hearing aid into your ear.
- ON** - If the hearing aid is manually powered off, pressing the user control for three seconds will power it on. The delay exists to give you time to insert the hearing aid into your ear.
- OFF** - The hearing aids will power off automatically when placed in the charging port/post and charging begins, as long as your charger is plugged into an external power source (i.e. wall outlet).
- OFF** - The hearing aids can be powered off manually by pressing the user control for three seconds.

Charger Care

- Keep your charger clean. Heat, moisture and foreign materials can result in poor performance.
 - Using the provided cleaning brush keep the charging ports/posts and hearing aid microphones clear of debris.
 - Do not use water, solvents or cleaning fluids to clean the charger.
 - Keep lid closed as much as possible to avoid dust and debris build-up.
 - Store your charger in a clean and dry location, such as a dresser or shelf rather than the bathroom or kitchen.
- To ensure the longest life of your rechargeable hearing aid batteries:
 - Fully charge hearing aid batteries every night.
 - Do not expose to excess heat, i.e. do not store on a window sill or in a hot car.

Charger Troubleshooting Guide

| SYMPTOM | POSSIBLE CAUSES | SOLUTIONS |
|---|---|--|
| No LED indicator when hearing aids are inserted into the charging port/post | Incorrect hearing aid orientation | Reposition your hearing aids in the charging port/post. |
| | Charger is not plugged into an external power source (i.e. wall outlet) | Connect the power supply cord to your charger and plug into an external power source (i.e. wall outlet). The hearing aid charging LEDs will turn on for a few seconds to indicate connection to the power source. If they do not, contact your hearing professional. |
| Red blinking LED next to charging port/post | Fault occurred | Remove your hearing aids from the charging port/post, wait until the LED turns off, then re-insert. If the red blinking LED persists, contact your hearing professional. |

Charger Troubleshooting Guide


| SYMPTOM | POSSIBLE CAUSES | SOLUTIONS |
|---------------------------------------|---|--|
| Hearing aids whistling in the charger | Incorrect hearing aid orientation/insertion | Reposition your hearing aids in the charging ports/posts. Confirm that the charging LED begins to glow. |
| | Charger is not plugged into an external power source (i.e. wall outlet) | Your charger may not be plugged into an adequate external power source (i.e. wall outlet). Test another wall outlet or power supply to ensure charger is powered. If you do not have access to an external power source, push and hold the hearing aid's user control for three seconds to turn off. |

Safety Information

INTENDED USE: This hearing aid charger is intended to charge lithium-ion rechargeable hearing aids, and is to be used with the patient's selected hearing aid solution. For information about your hearing aid, please consult the hearing aid specific operations manual.

Your charger should not be used during an MRI procedure or in a hyperbaric chamber.

Your charger is not formally certified to operate in explosive atmospheres such as may be found in coal mines or certain chemical factories.

 Your charger should be stored and transported within the temperature, humidity, and pressure ranges of -10°C (14°F) to +45°C (113°F), 10%-95% rH, and 70 kPa – 106 kPa (equivalent to altitudes from 1,200 ft (380 m) below sea level to 10,000 ft (3,000 m)).

The charging temperature range is between 10°C (50°F) and 40°C (104°F) and between 10%-95% RH and 70 kPa-106 kPa.

Caution:

- If the charger is hot, do not touch it until cool.
- If the charger is not working, do not disassemble. Due to a shock hazard, please send in for repair.
- Keep out of reach from children. Do not ingest anything in the package, including desiccant, cleaning tool, etc.
- Any cords and AC adapters must be approved or listed by a Nationally Recognized Testing Laboratory.

Any serious incident that has occurred in relation to your Starkey device should be reported to your local Starkey Hearing Technologies representative and the Competent Authority of the Member State in which you are established. A serious incident is defined as any malfunction, deterioration in the characteristics and/or performance of the device, or inadequacy in the device Operations Manual/ labeling which could lead to the death or serious deterioration in the state of health of the user, OR could do so upon recurrence.

We are required by regulations to provide the following warnings:

⚠ WARNING: Use of wireless hearing aids or charger directly next to other electronic equipment should be avoided because it could result in improper performance. If such use is necessary, note as to whether your hearing aids and the other equipment are operating normally.

⚠ WARNING: Use of accessories, components or replacement parts other than those provided by the manufacturer of your hearing aids or charger could result in increased electromagnetic emissions and decreased electromagnetic immunity and could result in degradation of performance.

⚠ WARNING: If Portable Radio Frequency communications equipment is used closer than 30 cm (12 inches) from your hearing aid or charger, degradation of the performance of your hearing aid or charger could result. If this occurs, move away from the communications equipment.

DO NOT OPEN HEARING AID OR CHARGER, NO USER-SERVICEABLE PARTS INSIDE

The Standard Charger and Custom Charger have a rating of IP 21 per IEC 60529. This means the unit is protected against solid objects over 12 mm, such as fingers and falling water drops, such as condensation.

The service life of both the Standard Charger and Custom Charger is 3 years.

The Standard Charger and Custom Charger have been tested to, and have passed, the following emissions and immunity tests:

- IEC 60601-1-2 radiated and conducted emissions requirements for a Group 1 Class B device as stated in CISPR 11.
- Harmonic distortion and voltage fluctuations affecting the power input source as stated in Table 2 of IEC 60601-1-2.
- RF radiated immunity at a field level of 10 V/m between 80 MHz and 2.7 GHz as well as higher field levels from communications devices as stated in Table 9 of IEC 60601-1-2.
- Immunity to power frequency magnetic fields at a field level of 30 A/m and proximity magnetic fields as stated in Table 11 of IEC 60601-1-2.
- Immunity to ESD levels of +/- 8 kV conducted discharge and +/- 15 kV air discharge.
- Immunity to Electrical fast transients on the power input at a level of +/- 2 kV at a 100 Hz repetition rate.
- Immunity to Surges on the power input of +/- 1 kV line to line.
- Immunity to conducted disturbances induced by RF fields on the power input as stated in Table 6 of IEC 60601-1-2.
- Immunity to voltage dips and interruptions on the power input as stated in Table 6 of IEC 60601-1-2.

FCC NOTICE

These devices comply with part 15 of the FCC rules and with ISED Canada license-exempt RSS standards. Operation is subject to the following two conditions: (1) This device may not cause harmful interference, and (2) this device must accept any interference received, including interference that may cause undesired operation of the device.

Note: The manufacturer is not responsible for any radio or TV interference caused by unauthorized modifications to this equipment. Such modifications could void the user's authority to operate the equipment.

Starkey Hearing Technologies

6700 Washington Ave. South
Eden Prairie, MN 55344 USA



Starkey Laboratories (Germany) G.m.b.H

Weg beim Jäger 218-222

22335 Hamburg

Germany



Class II Device



Waste from electronic equipment must be handled according to local regulations



Consult Operations Manual



Keep dry

INSTRUCTIONS FOR DISPOSAL OF OLD ELECTRONICS

Starkey Hearing Technologies encourages, the EU requires, and your local community laws may require, that your hearing aids and charger be disposed of via your local electronics recycling/disposal process.

The instructions below are provided for the benefit of disposal/recycling personnel. Please include this manual when disposing of your charger.



The Starkey logo and Starkey Hearing Technologies are trademarks of Starkey Laboratories, Inc.

©2022 Starkey Laboratories, Inc. All Rights Reserved. 86375-007 4/22 BKL3089-03-EE-SC